



The Westfield



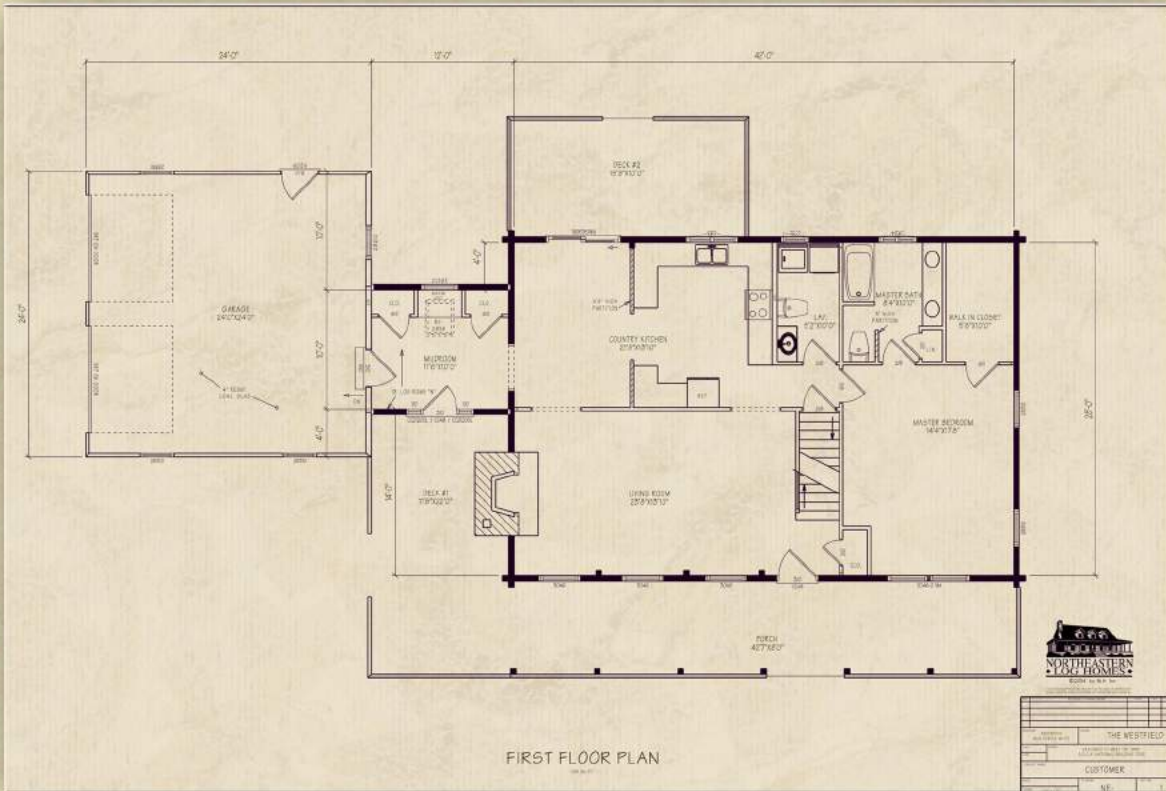
Northeastern Log Homes

info@northeasternlog.com 800-624-2797 www.northeasternlog.com

*Artist's rendering, photography and optional design ideas may vary from the standard model. Please always consult the standard floorplan and refer to the Premier Series material list as to what is included.



The Westfield



Premier Home Series

28' x 42' Size

2,081 Square Feet

Three Bedrooms

2.5 Baths

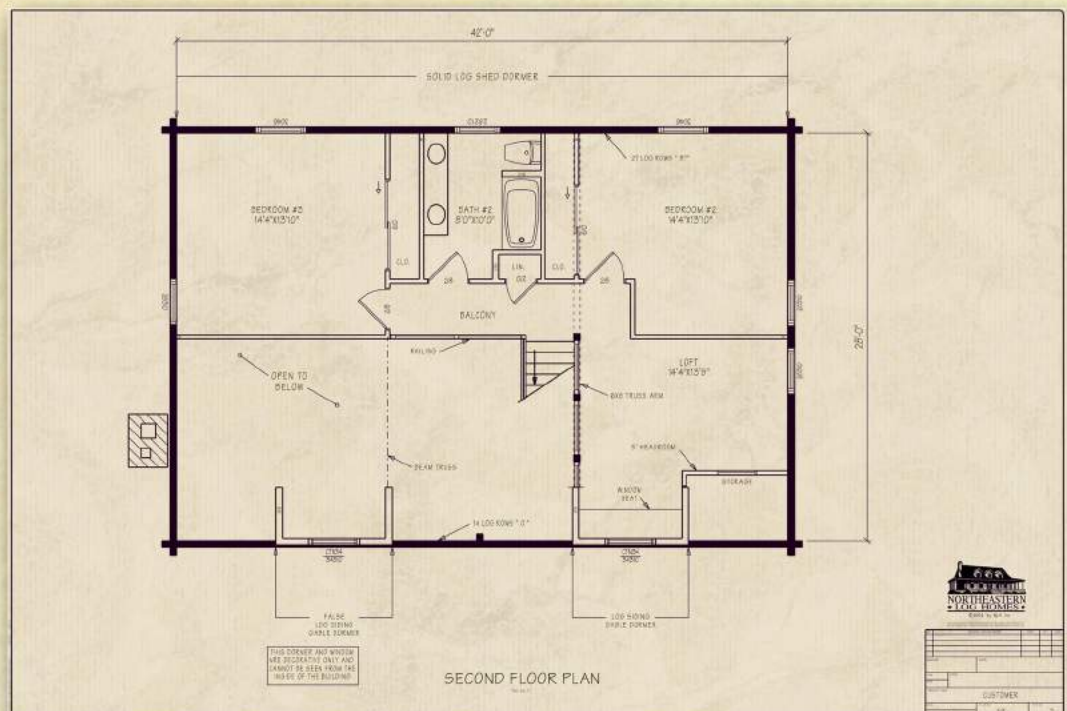
Optional Design Ideas

Open up the false dormer to let in more light to the living room

Remove the 1/2 wall in between the kitchen and dining area

Put 1/2 bath into the mudroom area and the first floor lav can now be a giant walk-in pantry

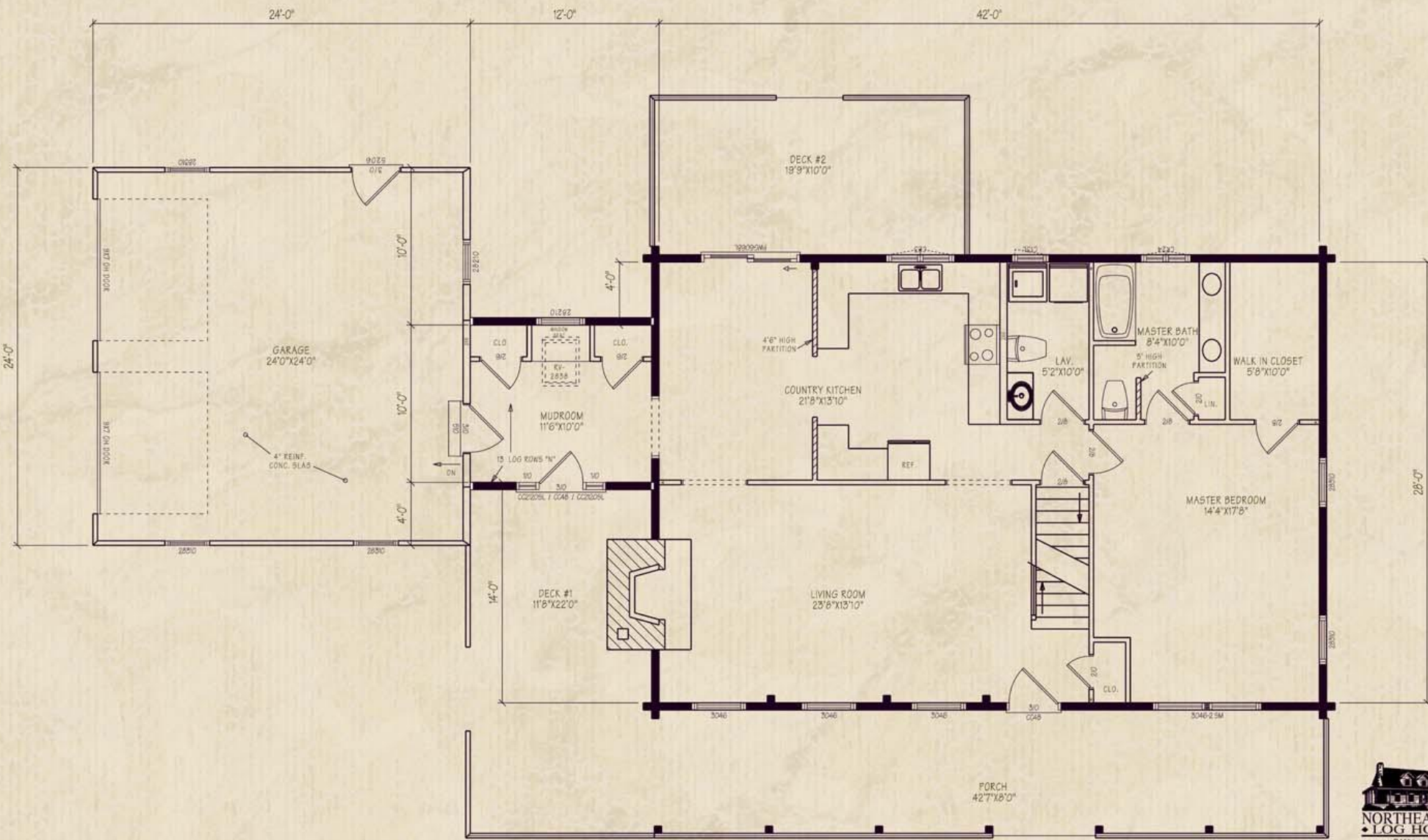
The mudroom can also be modified to house a full bath and washer/dryer. Now, you can grow your kitchen size by an additional 6' FEET!



Northeastern Log Homes

info@northeasternlog.com 800-624-2797 www.northeasternlog.com

*Artist's rendering, photography and optional design ideas may vary from the standard model. Please always consult the standard floorplan and refer to the Premier Home Series material list as to what is included. All images and plans copyright Northeastern Log Homes



FIRST FLOOR PLAN
1201 04.01



PROJECT: THE WESTFIELD		DESIGNED BY WEST ONE HOMES	
ARCHITECT: ANDERSON AND BERRY WHITE		S.D.S.A. NATIONAL BUILDING CODE	
DATE: 12/01/04		CUSTOMER	
SHEET: 1 OF 1		NE-	

